



GAT MONTHLY MEMBERSHIP PROGRESS REPORT

Results as of: 6/30/2021

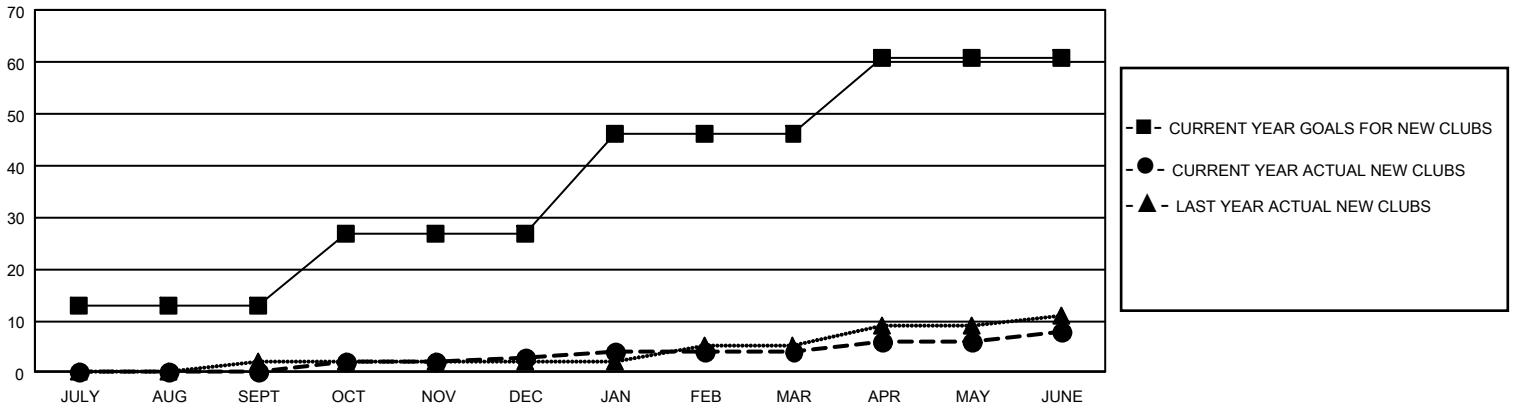
GAT Constitutional Area 5 - Japan

REPORT DOES NOT INCLUDE CLUBS IN UNDISTRICTED AREAS.

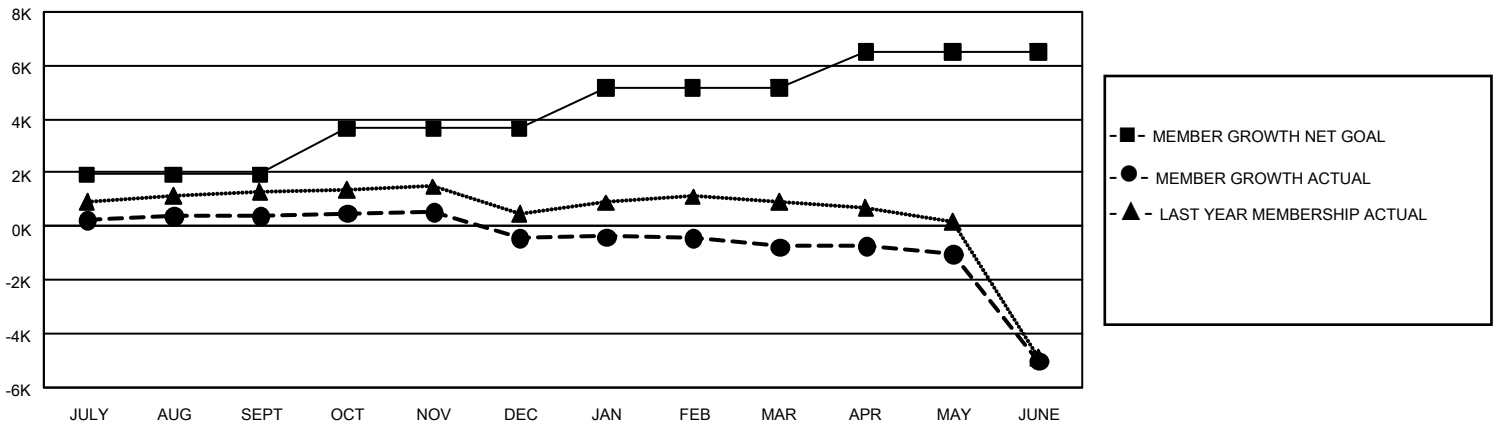
Clubs			
RESULTS FOR 2020-2021			
QUARTER	NEW CLUB GOAL	NEW CLUBS	DROPPED CLUBS
JULY/AUG/SEPT	39	0	5
OCT/NOV/DEC	42	3	12
JAN/FEB/MAR	57	1	3
APR/MAY/JUNE	45	4	46

Members			
RESULTS FOR 2020-2021			
QUARTER	MEMBER GROWTH NET GOAL	MEMBER GROWTH ACTUAL	DROPPED MEMBERS ACTUAL (including transfers)
JULY/AUG/SEPT	1924	2,283	1,798
OCT/NOV/DEC	1716	1,380	2,107
JAN/FEB/MAR	1538	1,128	1,397
APR/MAY/JUNE	1337	1,379	5,557

GOALS AND ACTUAL NEW CLUBS CUMULATIVE



GOALS AND ACTUAL MEMBERS CUMULATIVE



DROPPED CLUBS: 66 DROPPED MEMBERS DECEASED 933 CLUB CANCELLED 334 OTHER 9,591 TOTAL 10,858	1,901 CLUBS OF 2,916 ADDED 1 OR MORE NEW MEMBERS	GENDER DISTRIBUTION MALE 77,449 (76.46%) FEMALE 23,843 (23.54%)
	CLICK HERE FOR CUMULATIVE MEMBERSHIP DATA	TOTAL FAMILY UNIT MEMBERS 35,891 FAMILY MEMBERS PAYING HALF DUES 19,767